

1.0 INTRODUCTION

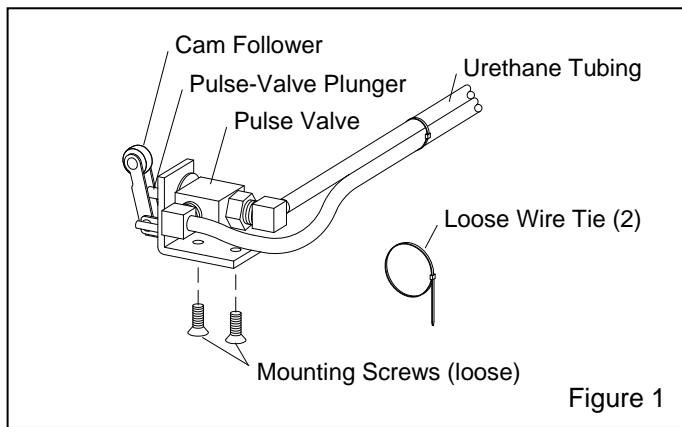
1.1 Scope of Instructions

1.1.1 These instructions cover installation, operation, troubleshooting, and replacement parts for the CDC-1 foot-pedal pulse kit. Refer to the appropriate manual for operation of the cabinet and dust collector.

1.2 Description and Operating Principle

1.2.1 With the installation of the foot-pedal pulse kit to a user's existing BNP foot pedal, the filter cartridge is automatically pulse cleaned each time the foot pedal is pressed, and again when it is released.

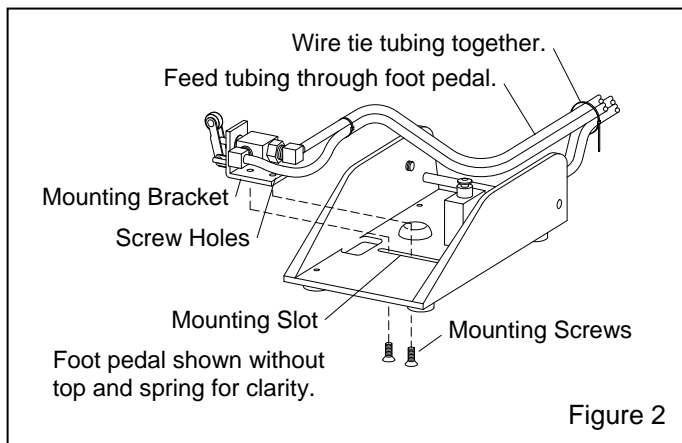
1.2.2 Components of the assembled kit are shown in Figure 1.



2.0 Installation of Pulse Kit to Foot Pedal

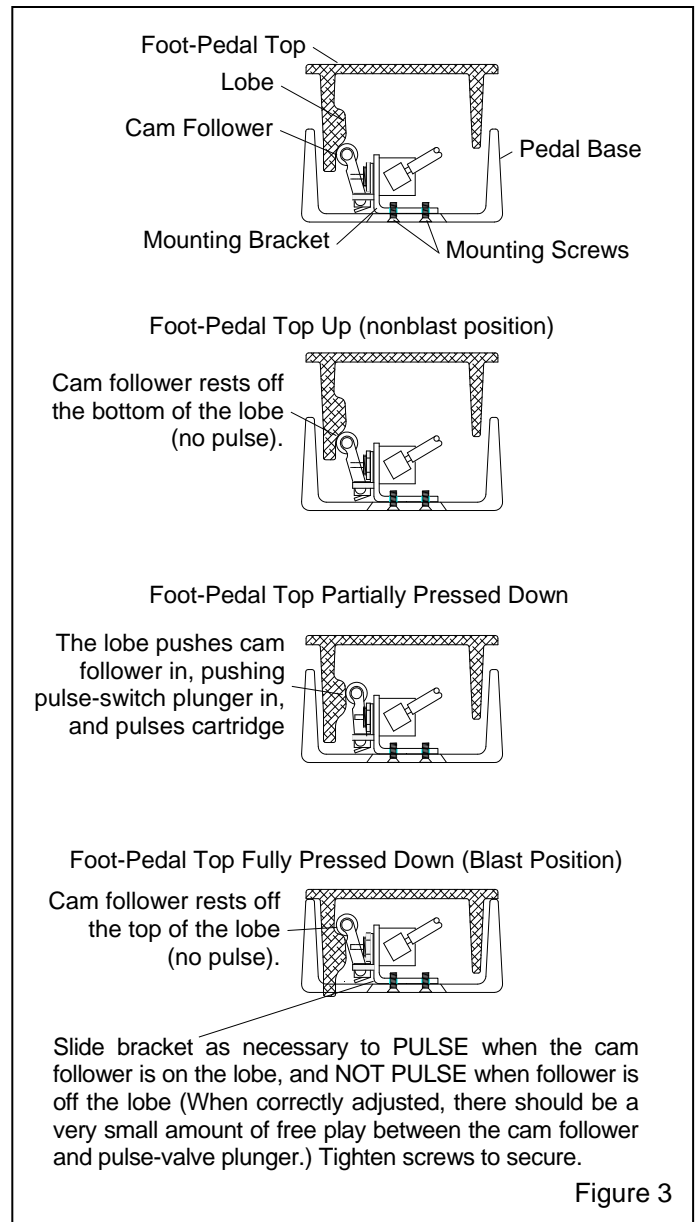
NOTE: If the foot-pedal pulse option was factory installed, proceed to Paragraph 4.3.8 to connect the foot-pedal tubing to the dust collector.

2.1 Refer to Figure 2 and feed the urethane tubing through the existing BNP foot pedal from the front toward the back and above the top hinge pin.



2.2 Place the mount bracket over the slot in the foot-pedal base and loosely install the screws through the slot and into the threaded holes in the bracket.

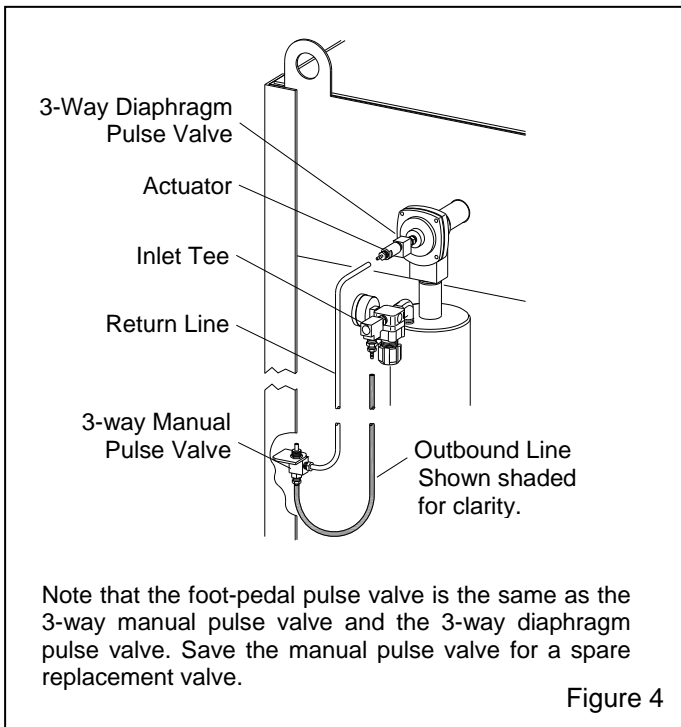
2.3 Refer to the illustrations in Figure 3 and slide the pulse assembly as needed so the cam follower is off the lobe when the pedal is up, on the lobe when the pedal is partially pressed and off the lobe when the pedal is fully pressed. Tighten the screws to prevent movement.



2.4 Use one of the loose wire ties to strap the pulse-valve tubing and foot-pedal tubing together.

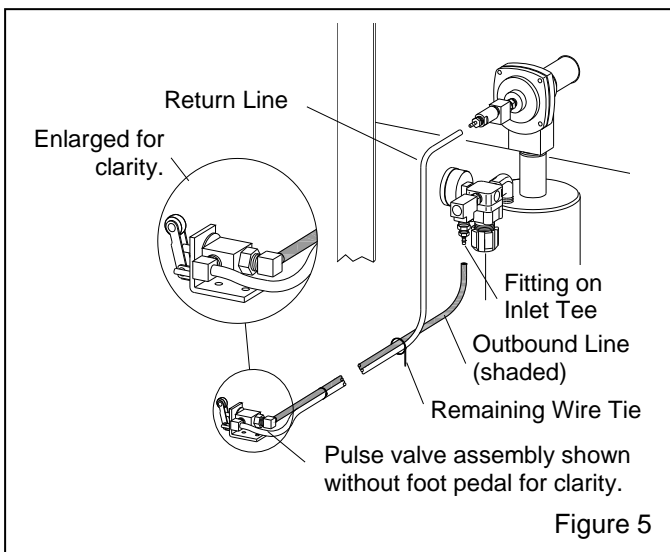
3.0 Install Pulse Tubing to Dust Collector

3.1 Refer to Figure 4 and pull or pry the manual pulse-valve tubing from the barb fittings on the pulse-valve actuator and inlet tee.



3.2 Refer to Figure 5 and connect the foot-pedal pulse tubing.

1. Separate a few inches of the twinline tubing and push the outbound line (shown shaded for clarity) from the pulse valve IN port onto the barb fitting on the inlet tee.
2. Push the return line (shown unshaded) from the pulse valve OUT port onto the barb fitting on the actuator.
3. Use the remaining wire tie to prevent further separation of the twinline tubing.



3.3 Test the operation by pressing and releasing the foot pedal; the cartridge should pulse each time the foot pedal is pressed and again when it is released.

If it does not operate accordingly, review the adjustment process in Section 2.3.

Foot-Pedal Pulse Kit Replacement Parts – Figure 6

Item	Description	Stock No.
(-)	Foot-pedal pulse kit, field installed	29480
1.	Cam follower	19576
2.	Bracket, valve mount	22858
3.	Spacer	19258
4.	Valve, 3-way (pulse valve)	12202
5.	Fitting, 1/8" NPT elbow x 1/8" barb	11733
6.	Tubing, 1/8" ID twin urethane, per foot, 20 ft. standard length	19577
7.	Roll pin, 1/8"	20479
8.	Screw, 10-32 x 1/2" flat head	19571
9.	Tie, nylon wire	12139

