

**MODEL LPV
LO-POT ABRASIVE METERING VALVE**

O. M. 05658

**DATE OF ISSUE: 05/83
REVISION: D, 03/14**



WARNING

Do not proceed with these instructions until you have READ the orange cover of this MANUAL and YOU UNDERSTAND its contents. *

These WARNINGS are included for the health and safety of the operator and those in the immediate vicinity.

***If you are using a Clemco Distributor Maintenance and Parts Guide, refer to the orange warnings insert preceding the Index before continuing with the enclosed instructions.**

Electronic files include a Preface containing the same important information as the orange cover.

© 2014 CLEMCO INDUSTRIES CORP.
One Cable Car Dr.
Washington, MO 63090
Phone (636) 239-4300
Fax (800) 726-7559
Email: info@clemcoindustries.com
www.clemcoindustries.com



1.0 INTRODUCTION

1.1 Scope

1.1.1 This manual covers installation, operation, and replacement parts for Clemco model LPV, Lo-Pot abrasive metering valve.

1.1.2 The metering valve is a single component of a blast machine system. The operator must be qualified to safely operate the blast machine and remote controls, and all other equipment used with the valve. To ensure safe blasting, all operators and personnel involved with the abrasive blasting process must read and understand the manuals, including the information included in the orange cover, for all devices used with the valve.

1.1.3 The Clemco booklet "Abrasive Blasting Safety Practices" contains important safety information about abrasive blasting that may not be included in equipment operation manuals. Copies are available from Clemco Industries and may be requested through our website www.clemcoindustries.com or requested via email to info@clemcoindustries.com.

1.2 Safety Alerts

1.2.1 Clemco uses safety alert signal words, based on ANSI Z535.4-2011, to alert the user of a potentially hazardous situation that may be encountered while operating this equipment. ANSI's definitions of the signal words are as follows:



This is the safety alert symbol. It is used to alert you to potential physical injury hazards. Obey all safety messages that follow this symbol to avoid possible injury or death.

NOTICE

Notice indicates information that is considered important, but not hazard-related, if not avoided, could result in property damage.

⚠ CAUTION

Caution indicates a hazardous situation that, if not avoided, could result in minor or moderate injury.

⚠ WARNING

Warning indicates a hazardous situation that, if not avoided, could result in death or serious injury.

⚠ DANGER

Danger indicates a hazardous situation that, if not avoided, will result in death or serious injury.

2.0 INSTALLATION

⚠ WARNING

Failure to observe the following procedure could cause serious injury or death from the sudden release of compressed air.

- Empty the blast machine of abrasive.
 - Depressurize the blast machine.
 - Lockout and tagout the compressed air supply.
 - Bleed the air supply line to the blast machine.
-

2.2.1 Remove the pusher-line at the tee below the metering valve. Replace the metering valve and any worn pipe fittings. Reattach the pusher line.

3.0 ADJUST ABRASIVE FLOW

3.1 Begin adjustment with the metering valve closed. Closed is when the handle is turned to either side of center until it hits the stops.

3.2 While the operator is blasting, the machine tender increases abrasive flow by moving the handle toward center, no more than 1/4" (at end of handle) at a time, allowing time for the flow to stabilize before readjusting.

3.3 Optimum flow depends on the type and size of abrasive and blasting pressure, and can best be determined by experience. Use as little abrasive as possible while maintaining the maximum cleaning rate. The air/abrasive mixture should be mainly air. As a rule, the stream of abrasive coming out of the nozzle should barely discolor the air when seen against a contrasting background.

4.0 REPLACEMENT PARTS

Item	Description	Stock No.
(-)	Lo-Pot Metering Valve	05680
1.	Gasket, rubber, 2 required	02424
2.	Disc, stainless	02425
3.	Lower body	02426
4.	Metering handle, heavy duty	20498
5.	Handle pin	20246
6.	Packing gland	02437
7.	O-ring, 7/8" OD	21165
8.	Gasket, shaft	02439
9.	Cap screw, 1/2 NC x 1-3/4", 4 required	03455
10.	Cap screw, 1/2 NC x 2-1/2", 2 required	03457
11.	Nut, 1/2 NC hex, 6 required	03511
12.	Washer, 1/2 flat, 2 required	03515
13.	Upper body	05631
14.	Valve, stainless	05632
15.	Spring	05633
16.	Plug, 1/2" socket head	05681
17.	Hitch pin	20245

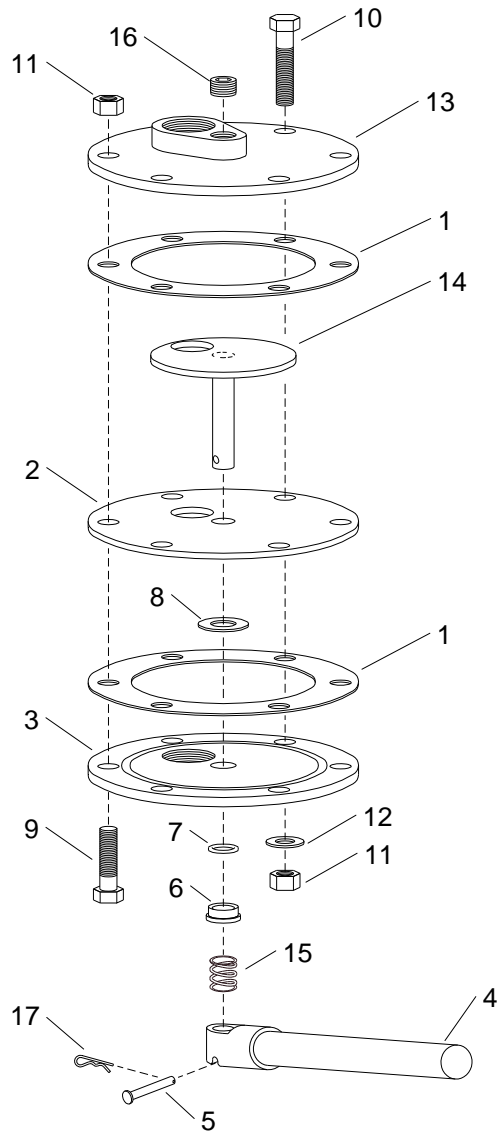


Figure 1