



**CLEMCO**  
The Performance System

## TECHNICAL DATA SHEET

*Note: For safe, efficient blasting, read and follow the owner's manual and seek training for everyone who will use this equipment.*

### Purpose

The SG-300 is a suction blast system designed for abrasive blasting where the air supply is limited, or where low pressure blasting is necessary to protect delicate parts or soft surfaces.

Perfect for

- On-site glass & stone engraving
- Small paint stripping jobs
- Touch-up work after big jobs
- Farms, welding & machine shops, and home hobbyists
- Perfect for rental outlets

The SG-300 uses compressed air and abrasive to quickly clean and etch metal, masonry, glass, and other durable surfaces. You select the abrasive type, blast pressure, and nozzle size you need to create intricate works of art or just make fast work of a rusted fender.

### Requirements for Operation

These items are required but not included with the SG-300.

- Clean, dry compressed air of sufficient volume to maintain pressure at the blast gun, see table. Volume required will depend on application and desired production rate.
- Air-fed respirator suitable for abrasive blasting.
- Blast media – The versatile suction blast system handles most fine abrasives. Consult your Clemco distributor for appropriate media selection. As NIOSH recommends, do not use silica sand or any abrasive that contains more than trace amounts (more than 1%) of free silica for abrasive blasting.

The rugged, all-metal hopper holds about 1 cubic foot (or one bag) of abrasive, to let you blast for extended periods without stopping to refill.

## Description

The SG-300 system includes the hopper with abrasive metering mechanism, removable abrasive screen, 10 feet of air hose and media hose, trigger-control blast gun, air jet, and long-lasting tungsten carbide nozzle.



**SG 300 - Portable Blast Gun with Hopper**

## SG-300 Portable Suction Blast Gun with Hopper

Stock No. 02641



Air Jets		Nozzles		Pressure psi					
Jet	Jet	Nozzle	Nozzle						
Stock No	Orifice	Stock No	Orifice	40	50	60	70	80	
02660	1/8"	01354	5/16"	12	15	17	19	21	cfm
02661	3/16"	01355	3/8"	28	33	38	43	48	cfm
02662	1/4"	01356	1/2"	49	58	67	76	85	cfm

### Description of Operation

The operator controls blasting with a handle at the nozzle. Pressing the handle starts blasting, releasing it stops blasting. The hopper contains abrasive and meters it into the media hose. Air rushing through the suction gun's mixing chamber draws blast media into the airstream and propels it out the nozzle.

### Advantages

- Uses just a fraction of the air required by an industrial pressure blast machine
- Different size air jets let the SG-300 take maximum advantage of the available air supply

- Metering system maintains smooth, consistent media flow
- Hand-portable design goes anywhere

### Approvals and Certifications

Trigger-control blast gun complies with OSHA regulation 1910.244 (b).

## Related Clemco Literature

### Description

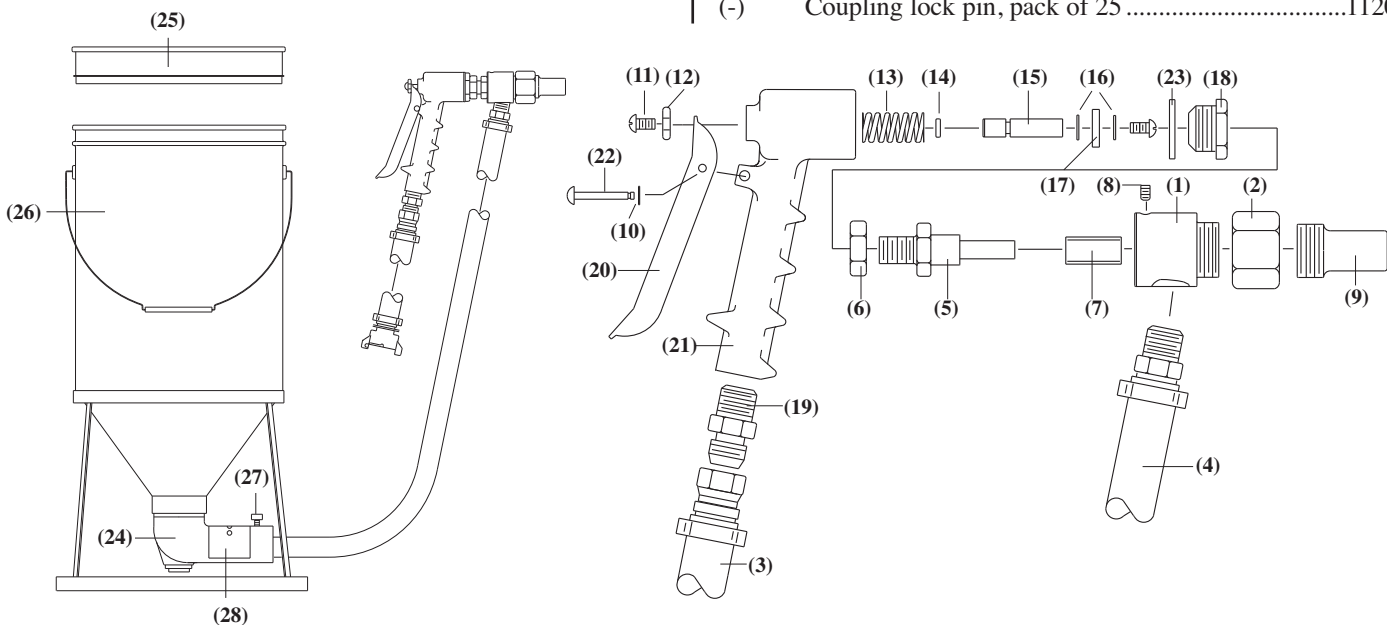
Contractor Series Catalog .....	21385
Abrasive Blasting Safety Practices .....	22090
Blast Off 2 .....	09294
Suction Gun SG-300 Owner's Manual .....	06165

## SG-300

### Item Description

Item	Description	Stock No.
1.	Suction body .....	02663
2.	Suction body nut .....	02664
3.	Air hose assembly, 1/2" dia x 10 ft. ....	02665
4.	Material hose assembly, 1/2" dia x 10 ft. ....	02666
5.	Air jet	
	1/16" orifice .....	02659
	1/8" orifice (std.) .....	02660
	3/16" orifice .....	02661
	1/4" orifice .....	02662
6.	Lock nut .....	02667
7.	Air jet sleeve .....	02668
8.	Set screw, 1/4-NC x 1/4" .....	03075

9.	Nozzle	
	3/16" orifice .....	01352
	5/16" orifice (std.) .....	01354
	3/8" orifice .....	01355
	1/2" orifice .....	01356
10.	Retaining ring .....	02644
11.	Screw, round head, 8-32 x 3/8" .....	02645
12.	Valve lift washer .....	02646
13.	Spring, 3/8" ID x 11/8" long .....	02647
14.	O-ring, 3/16" ID x 1/16" thick .....	01992
15.	Valve stem .....	02649
16.	Washer, No. 8 x 1/2" OD .....	02648
17.	Valve seat, neoprene, 3/4" OD x 1/8" thick .....	02650
18.	Valve seat, brass .....	02651
19.	Air hose connector .....	02652
20.	Valve trigger .....	02653
21.	Body .....	02654
22.	Trigger hinge pin .....	02655
23.	Valve seat gasket .....	02657
24.	Abrasive feed elbow with plug .....	02676
25.	Hopper screen .....	02673
26.	Hopper .....	02675
27.	Retaining screw .....	03131
28.	Adjusting sleeve .....	10809
(-)	Coupling lock pin, pack of 25 .....	11203



## Packaging

Ships in one cardboard carton 15-1/2" x 14 x 28-1/4"

## Dimensions

Item	Stock No.	Weight
SG-300	02641	20 lb
(Screen and hopper on stand is 27" H x 13" Dia.)		

## Color

Champagne

Authorized Distributor:

ISO 9001:2008 certified. Clemco is committed to continuous product improvement. Specifications are subject to change without notice.