

**ABRASIVE CLEANER-MODEL BRAC  
O.M. 04122**

**MANUAL NUMBER: 084-0875  
DATE OF ISSUE: 08/75  
REVISION: C, 02/94**

** WARNING**

**Do not proceed with these instructions until you have READ the orange cover of this MANUAL and YOU UNDERSTAND its content.\* These WARNINGS are included for the health and safety of the operator and those in the immediate vicinity.**

**\*If you are using a Clemco Distributor Parts and Maintenance Guide refer to the orange warnings insert preceding the Index before continuing with the following instructions.**

© CLEMCO INDUSTRIES CORP.  
One Cable Car Drive  
Washington, MO 63090  
Phone (314) 239-4300  
Fax (314) 239-0788



**1.0 INTRODUCTION**

**1.1 Scope**

1.1.1 This manual covers set-up, operation, maintenance troubleshooting and replacement parts of the Clemco Blast Room Abrasive Cleaner Model BRAC.

**1.2 Description**

1.2.1 The Clemco, screened, air wash abrasive cleaner is designed for heavy, continuous usage in industrial blast rooms. The unit mounts directly on the blast machine and is fed by a bucket elevator. Oversized materials, dust and fines (non-usable abrasive) are automatically discharged, while reusable abrasive is retained and held in the storage section. Abrasive held in the storage section automatically refills the blast machine each time the machine is depressurized.

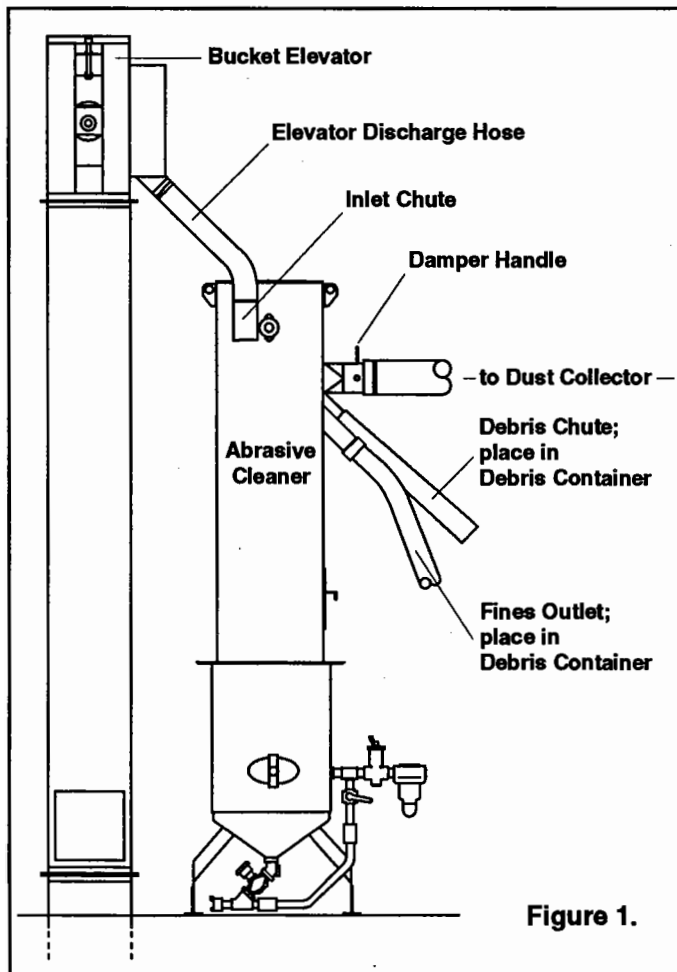


Figure 1.

1.2.2 Typical abrasive cleaner set-ups are shown in Figures 1 and 2. Figure 1 shows an abrasive cleaner mounted over a single blast machine. Figure 2 shows a cleaner over two machines using a two pot stand assembly.

**2.0 INSTALLATION**

**2.1 Set up**

2.1.1 Uncrate the cleaner in close proximity to blast machine. The blast machine should be in its permanent position.

2.1.2 Position the abrasive cleaner so that when it is placed on the blast machine the material inlet chute and 6" diameter dust collector duct connection are oriented to their connecting components (bucket elevator discharge and dust collector ducting).

2.1.3 Install weather-strip gasket to the blast machine flange ring. Punch out gasket material to expose covered bolt holes.

2.1.4 Connect a cable or chain to the cleaner's lifting eyes and hoist to the height of the blast machine. The abrasive cleaner weighs approximately 600 lbs.

2.1.5 Lower the cleaner onto the blast machine flange insuring that the holes line up and cleaner is lowered straight down to final position. Bolt into place.

2.1.6 A 6" diameter duct must be fabricated between the duct connection on the cleaner to the dust collector or dust collector ducting. Smooth bore heavy duct hose may be used for short distances. The abrasive cleaner requires 600 CFM at 6" static pressure. A straight line duct to the dust collector is ideal. Avoid 90 degree bends where possible.

2.1.7 Attach the debris chute to the trash outlet on the abrasive cleaner. The bottom of the chute should empty into a 55 gallon drum or other suitable container.

2.1.8 Connect the provided 4" diameter X 10 ft. duct hose to the fines outlet tube. Place the opposite end in a 5 gallon bucket or similar container.

2.1.9 Connect a discharge hose from the bucket elevator to the abrasive cleaner inlet chute. The discharge hose must have at least a 40 degree incline. If required, put a stiffener on the hose to prevent it from sagging under the load of abrasive.

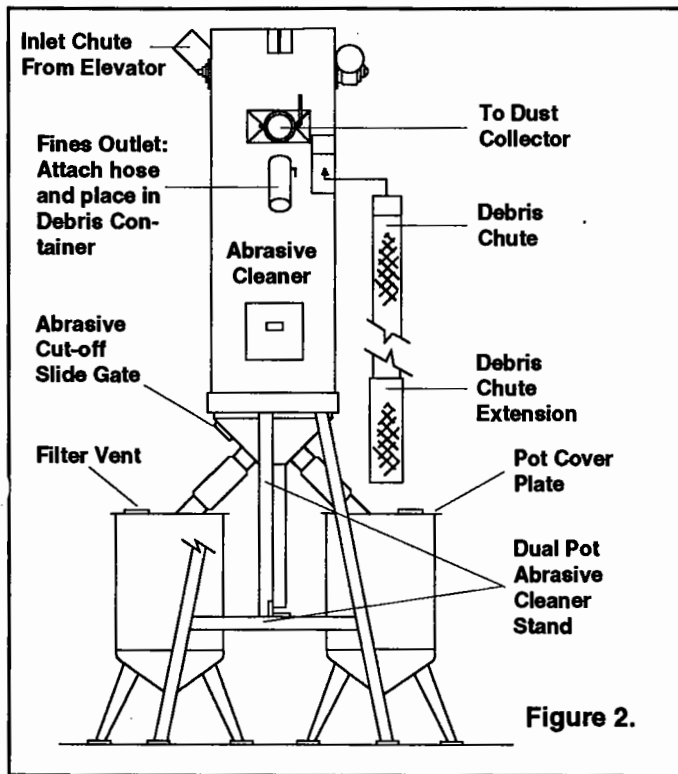
2.1.10 Connect wiring to motor. Motor is 1/4 HP, 230/460 V. 3 PH, 60 HZ. NOTE: ALL WIRING IS DONE BY THE PURCHASER. UNLESS AN OPTIONAL CONTROL PANEL WAS PURCHASED, MOTOR CONTROLS ARE ALSO FURNISHED BY THE PURCHASER. WHEN USED IN CONJUNCTION WITH A RECOVERY SYSTEM AND DUST COLLECTOR, COMPONENTS SHOULD BE INTERLOCKED SO THE DUST COLLECTOR ENER-

GIZES FIRST, ABRASIVE CLEANER SECOND AND RECOVERY SYSTEM THIRD.

**2.2 Pre-operation Inspection**

**2.2.1** Check the gear reducer for proper oil level. If any has leaked during shipment, replace.

**2.1.2** Jog the motor and check for proper rotation of the screened drum (see rotation decal on side of cleaner). DO NOT put any abrasive in the system at this time.



**3.0 OPERATION**

**3.1 Damper Gate Adjustment**

**3.1.1** The abrasive cleaner operates automatically requiring only compensating adjustment of the damper gate for specific abrasive used.

**3.1.2** Initially the damper should be in the wide open position (Handle Horizontal). After the abrasive cleaner has been operational for 8 hours, check the discharge from the fines material hose. If a large amount of abrasive (small amounts are normal) appears in the discharge container, partially close the damper gate. Check this adjustment periodically until only approximately 1/2 lb. appears after 4 to 8 hours of operation.

**3.2 Fines Outlet Tube**

**3.2.1** The fines outlet tube is supplied with a balanced flapper valve that closes when the dust collector is on, and opens to dump fines when the collector is turned off. A handle is provided as a back-up should the valve stick. In which case it should be manually opened and closed until serviced.

**3.3 Abrasive Loading**

**3.2.1** Abrasive loading should be done in accordance with the instructions provided with the recovery system. Do not load abrasive above level of the lower baffle. Do not add new abrasive unless all recoverable abrasive has been retrieved into the abrasive cleaner storage hopper.

**4.0 MAINTENANCE**

**4.1 Gear Reducer**

**4.1.1** Unless stated otherwise in the instructions supplied with the gear reducer, the lubricant should be changed after the first 100 hours of operation. Thereafter, lubricant should be changed every 6 months.

**4.1.2 Recommended Lubricant**

**4.1.2.1** Follow recommendations on the instructions supplied with the gear reducer.

**4.1.3 Changing Lubricant**

**4.1.3.1** Drain out initial oil and flush the gear case with an approved non-flammable, non-toxic solvent and refill with an approved lubricant.

**4.1.4** Inspect lubricant level monthly.

**4.2 Bearing Lubrication**

**4.2.1** Lubricate the idler bearing (drum shaft bearing) with No. 2 neutral mineral grease every 6 months.

**4.3 Flapper Valve**

**4.3.1** Check flapper valve weekly to ensure that it moves freely and that it closes when the collector is running and opens when it is turned off.

5.0 REPLACEMENT PARTS

| Item | Description  | Stock No. |
|------|--|-----------|
| (-)  | Right hand Abrasive Cleaner, complete ...            | 06801     |
| (-)  | Left hand Abrasive Cleaner, complete .....           | 06829     |
| 1.   | Screening Drums,<br>standard, with 3/16" holes ..... | 06804     |
|      | optional, with 1/8" holes .....                      | 06796     |

|    |   |       |
|----|---|-------|
| 2. | Drum shaft .....                          | 06805 |
| 3. | Idler bearing, 1" bore .....              | 06812 |
| 4. | 60:1 gear reducer .....                   | 06811 |
| 5. | 1/4 HP motor 230/460 V, 3PH, 60Hz .....   | 02980 |
| 6. | 4" diameter X 10 Ft. duct hose .....      | 00748 |
| 7. | Gasket, top plate, 8 ft. required .....   | 00137 |
| 8. | Gasket, Access Door, 4 ft. required ..... | 00186 |
| 9. | Hose clamp, 4.5" .....                    | 02806 |

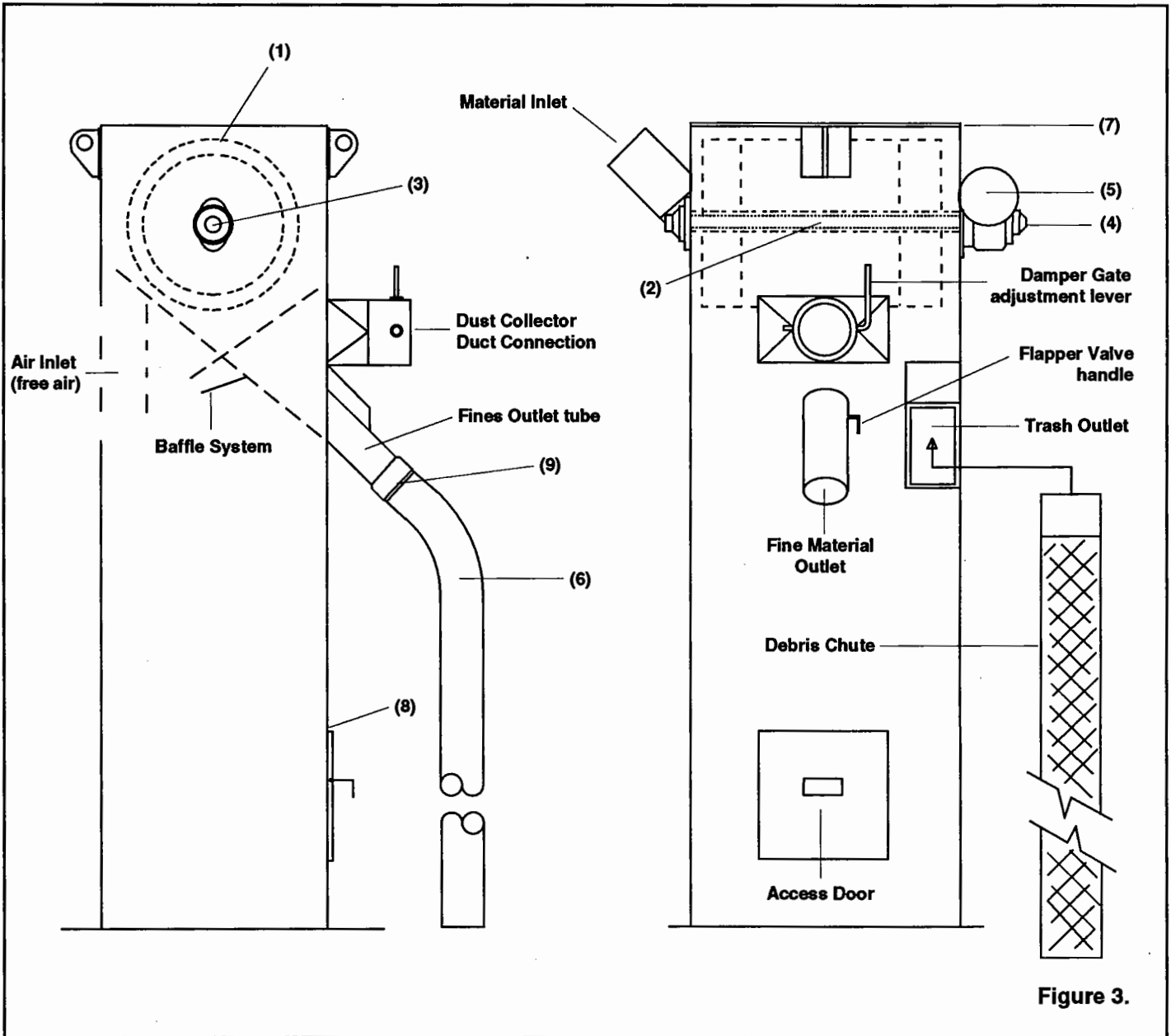


Figure 3.